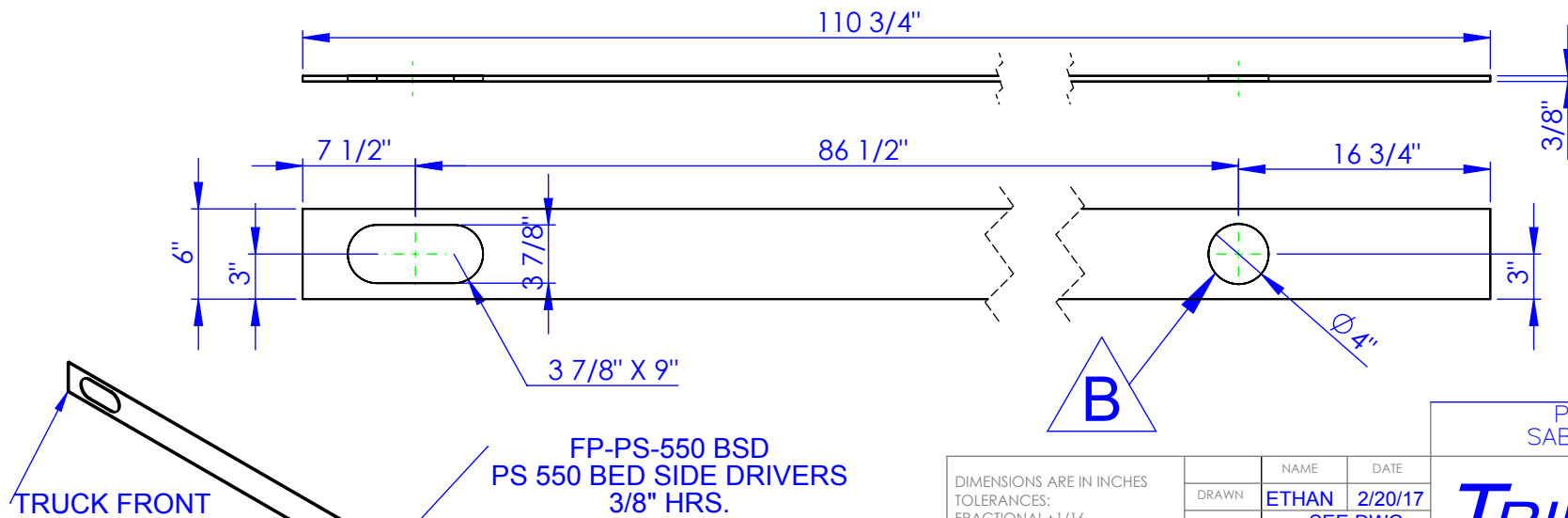
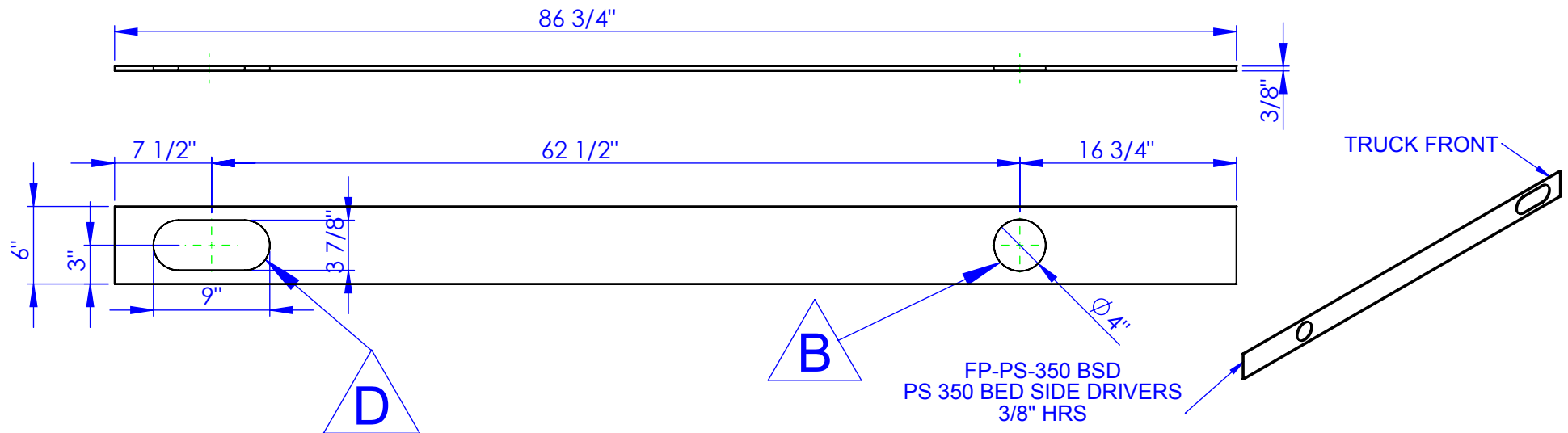


| REVISIONS | | | |
|-----------|----------------------------------|------------|----------|
| REV. | DESCRIPTION | DATE | APPROVED |
| B | MOVED HOLE FROM 12-5/8 TO 16-3/4 | 11/1/11 | |
| C | REVISED HOLES TO 4 FROM 4-1/2 | 12/15/2011 | |
| D | REVISE FRONT HOLE TO SLOT | 2/20/2017 | |



PROPRIETARY AND CONFIDENTIAL
THE INFORMATION CONTAINED IN THIS DRAWING IS THE SOLE PROPERTY OF TRIPLE C INC. ANY REPRODUCTION IN PART OR AS A WHOLE WITHOUT THE WRITTEN PERMISSION OF TRIPLE C INC. IS PROHIBITED.

| | |
|---|----------|
| DIMENSIONS ARE IN INCHES TOLERANCES: FRACTIONAL $\pm 1/16$ ANGULAR: MACH ± 1 BEND \pm TWO PLACE DECIMAL ± 0.10 THREE PLACE DECIMAL ± 0.005 | |
| MATERIAL | 3/8" HRS |
| DO NOT SCALE DRAWING | |

| | |
|---|---------------|
| NAME | DATE |
| DRAWN | ETHAN 2/20/17 |
| PART # | SEE DWG. |
| ASM # | |
| COMMENTS: FLOOR SIDE W/ FUEL HOLE FOR APEX & PRO SPEAR | |

| | |
|------------------------------------|------------------------------|
| P.O. BOX 248, SABETHA, KS 66534 | |
| TRIPLE C INC. | |
| SIZE A | DWG. NO. 15-2209 D |
| SCALE: 1:12 | WEIGHT: |
| SHEET 1 OF 1 | |

REV.
D